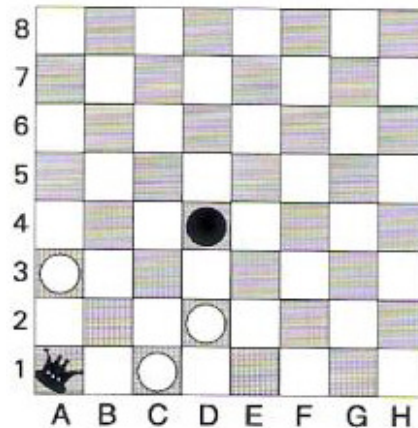
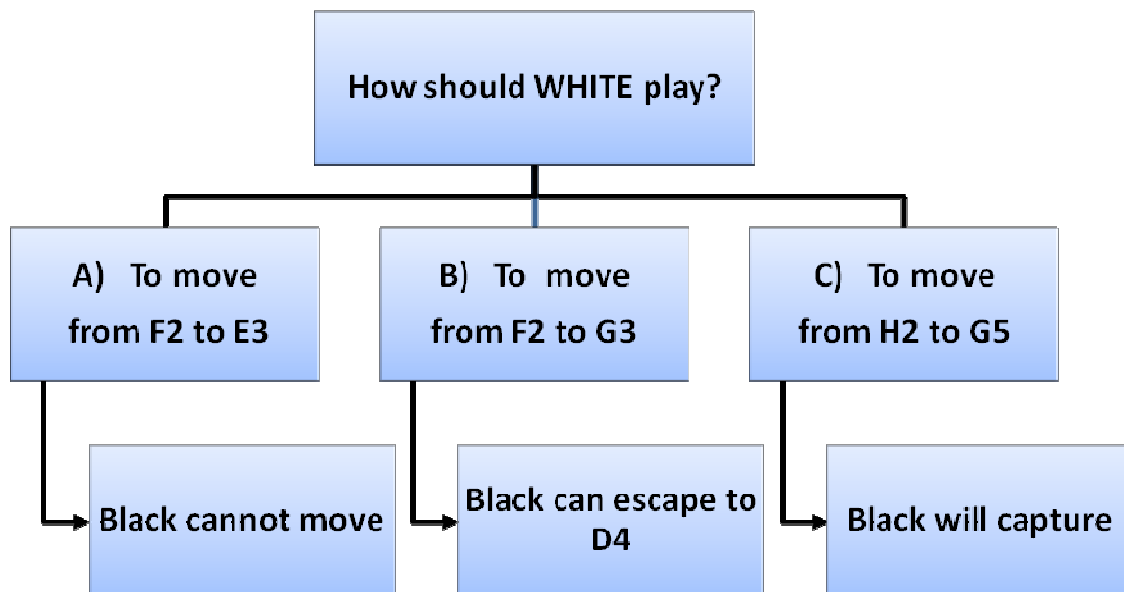


Dear Parents: Checkers will help children to...

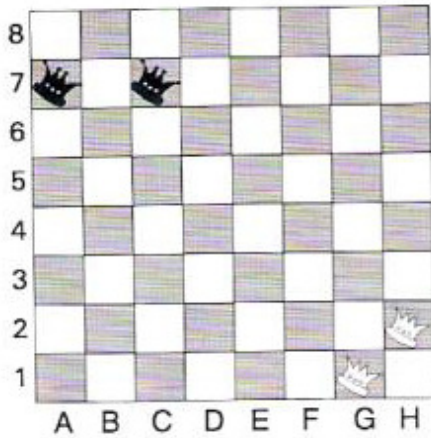
- Learn how to make long-term plans by applying the THINKING TREE Method.



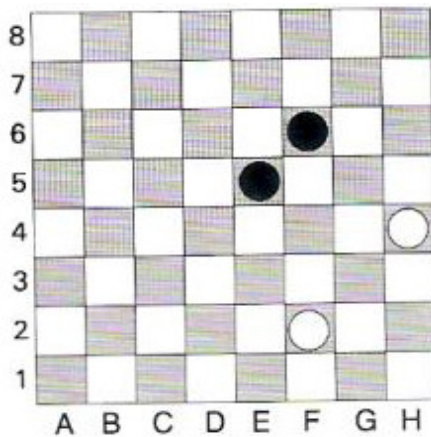
1. Choose WHITE's winning move.



Lesson: FIGURING IT OUT
Game: CHECKERS



2. BLACK to play. Can you find the winning move?



3. WHITE to play. Can you find the winning move?

THINKTIONARY

THE THINKING TREE – Is a method that helps us to evaluate the possibilities and choose the best one.

1. Define the problem
2. Examine possible solutions
3. Rank the possibilities
4. Choose the best option